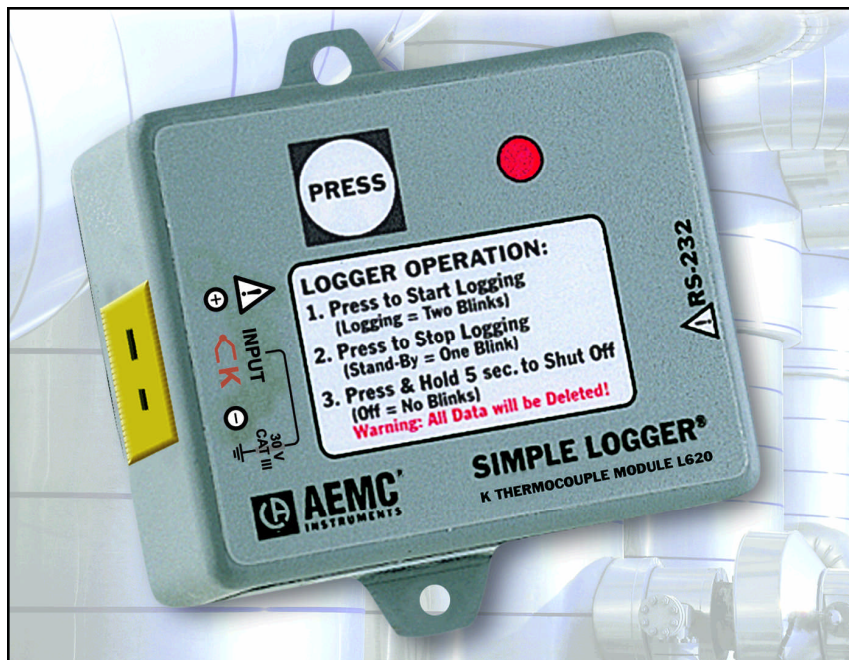


Thermocouple Temperature Simple Logger®

Models L610/L620/L630



Features

- ◆ Three models to choose from:
 - Model L610 (Type J)
32 to 1380°F (0 to 750°C)
 - Model L620 (Type K)
-325 to 2280°F (-200 to +1250°C)
 - Model L630 (Type T)
-325 to +660°F (-200 to +350°C)
- ◆ Inputs via color coded miniature thermocouple jacks
- ◆ RS-232 output
- ◆ One button operation
- ◆ 12 bit resolution

Applications

- ◆ Process control monitoring
- ◆ Wave soldering
- ◆ Refrigeration monitoring

Specifications

ELECTRICAL

- Number of Channels:** 1
- Measurement Range:**
 - J: 32 to 1380°F (0 to 750°C)
 - K: -325 to 2280°F (-200 to +1250°C)
 - T: -325 to +660°F (-200 to +350°C)
- Input:** J, K or T Thermocouple
- Input Connection:** Miniature color coded thermocouple jacks
- Resolution:** 12 bit
Better than 0.5°C
- Accuracy*:** 0.5%R + T/C Accuracy
- Sample Rate:** 4096/hr maximum
- Storage Technique:** Time Extension Recording™ (TXR™)
- Data Storage:** 8192 readings
- Power:** 9V Alkaline battery

Battery Life:

1 year for continuous recording @ 25°C

Output: RS-232 via DB9 connector

Indicators: Red LED flashes once every 2 seconds in STANDBY mode, twice every 2 seconds in LOGGING mode, and is off in OFF mode

Controls: One membrane switch used to start and stop recording sessions and to turn the data logger on and off

MECHANICAL

Size: 2-7/8 x 2-5/16 x 1-5/8"
(73.0 x 58.75 x 41.27mm)

Weight: 5 oz (140g)

Mounting: Base plate mounting holes or Velcro® pads supplied loose

ENVIRONMENTAL

Operating Temperature: -4 to +158°F (-20 to +70°C)

Storage Temperature: -4 to +174°F (-20 to +80°C)

Relative Humidity: 5 to 95% non-condensing

Safety: IEC 1010, 30V, Cat. III

***Accuracy:** Reference Conditions 23°C ± 3°C, 20-75% RH, DC or 50/60 Hz, no external AC magnetic field, DC magnetic 40A/m (earth field), supply 9V Alkaline battery.

ORDERING INFORMATION

CATALOG NO.

Simple Logger® Model L610, (Temperature – J Thermocouple)	Cat.#2116.15
Simple Logger® Model L620, (Temperature – K Thermocouple)	Cat.#2116.16
Simple Logger® Model L630, (Temperature – T Thermocouple)	Cat.#2116.17

All Thermocouple Temperature Simple Loggers® are supplied with software (3-1/2" disk), 6 ft. DB9 RS-232 serial cable, 9V Alkaline battery and user manual



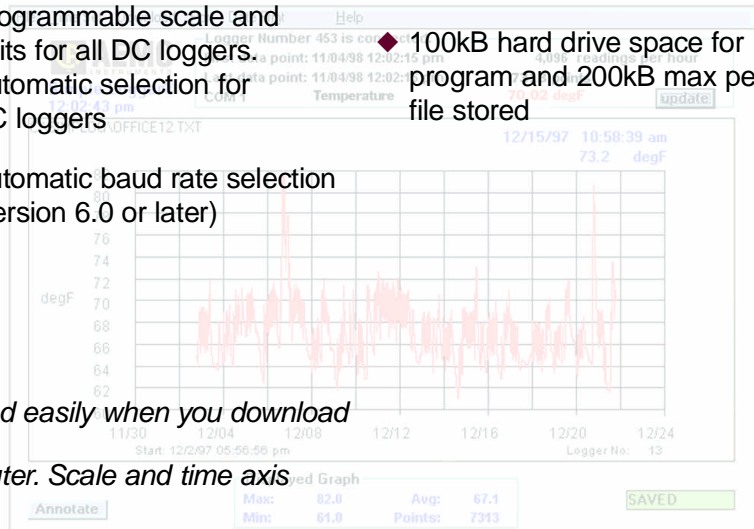
Simple Logger[®] Software

Features

- ◆ Very easy to set up and use — no programming required
- ◆ Statistics appear on screen: Max, Min, Avg, Date and Time
- ◆ On-Line display of data logger values
- ◆ Zoom capability with automatic statistics update
- ◆ User keyed text annotations
- ◆ Automatically displays values at the cursor position
- ◆ Export data to spreadsheet and database software
- ◆ Print both graphs and tabular listings
- ◆ Paste graphs into other applications
- ◆ Programmable scale and units for all DC loggers. Automatic selection for AC loggers
- ◆ Automatic baud rate selection (version 6.0 or later)

Computer Requirements

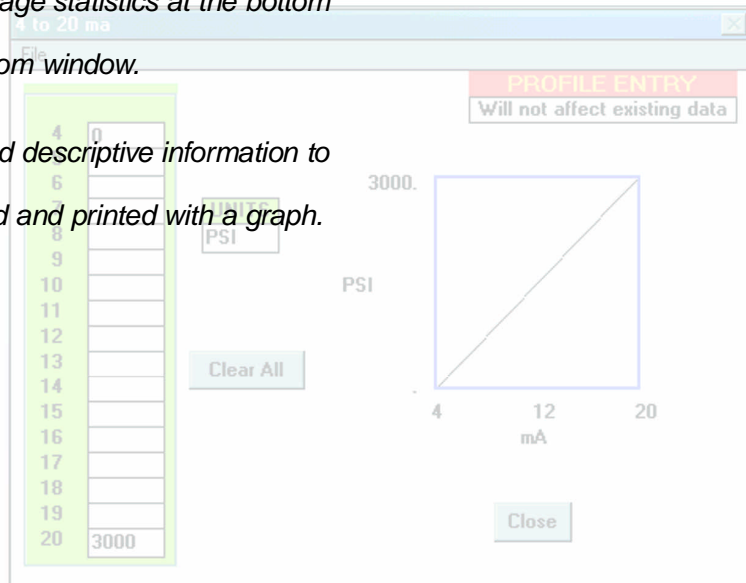
- ◆ 386 or higher
- ◆ 4 MB of RAM
- ◆ Windows[®] 3.1, Windows[®] 95 or Windows[®] 98
- ◆ 1 serial port not in use by any other device
- ◆ 100kB hard drive space for program and 200kB max per file stored



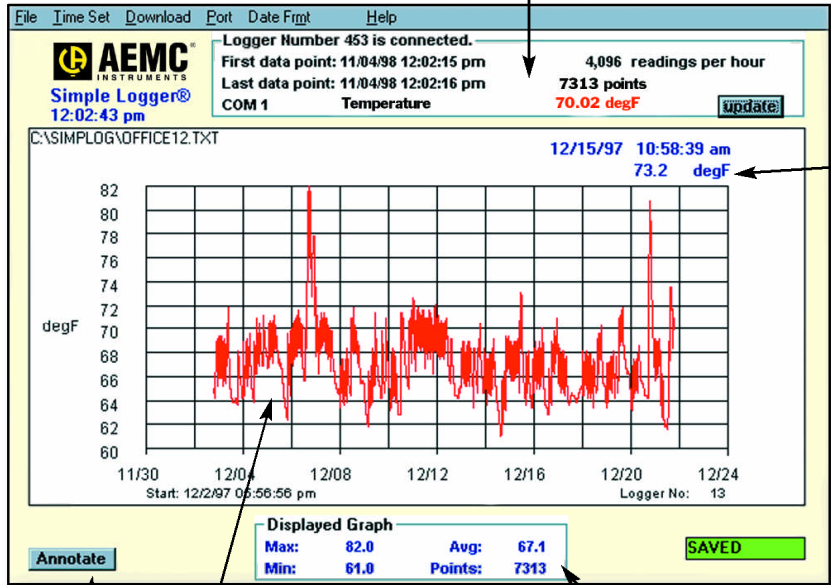
Plot graphs and view statistics quickly and easily when you download data from Simple Logger[®] to your computer. Scale and time axis update automatically.

Click and drag your mouse to zoom up the desired area of the graph for better viewing. The Min, Max and Average statistics at the bottom of the graph update automatically with zoom window.

Click the Annotate button to add a title and descriptive information to your graph. This information can be stored and printed with a graph.



On-line display of data

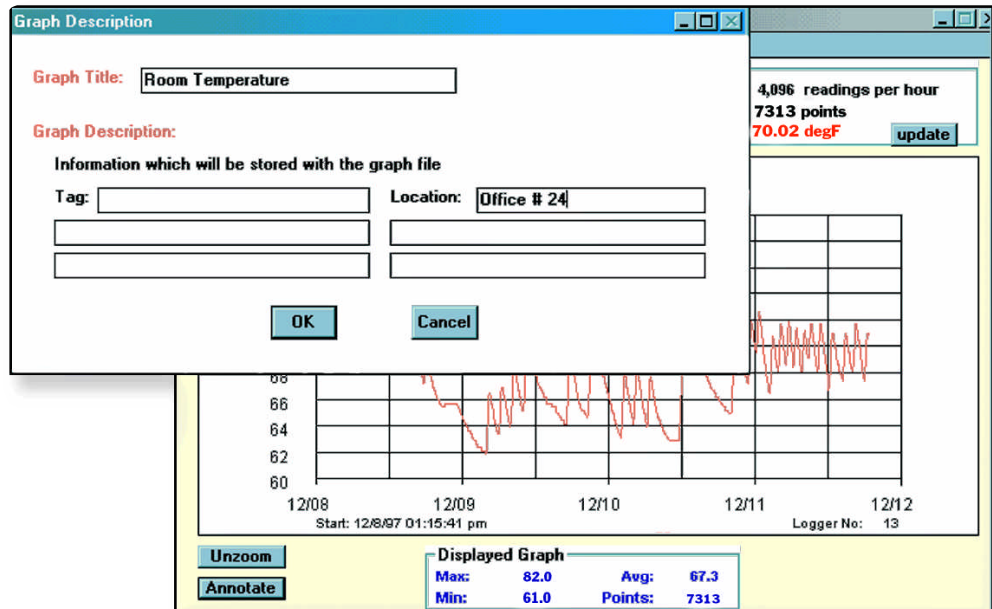


Automatic update of Y data at cursor position

Annotate button

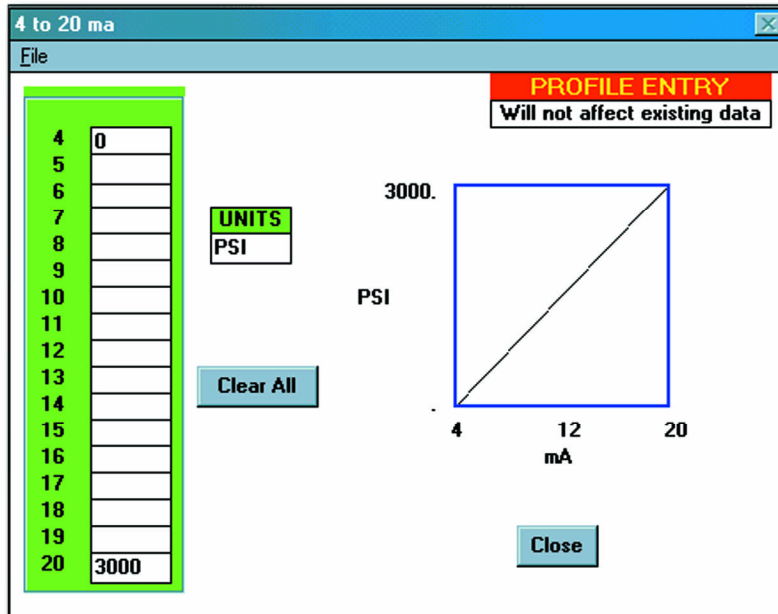
Plot area with value and time data shown on the X and Y axis

Graph Statistics

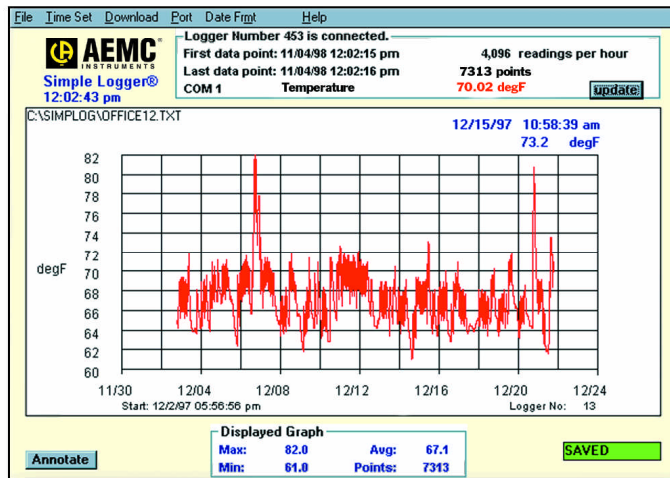


Click the Annotate button to add a title and descriptive information to your graph. This information can be stored and printed with a graph.

Simple Logger® Software



Click the scale button in the file menu to create custom scales and engineering units for DC voltage (Models L410 & L430) and DC current loggers (Model L320).



Click and drag your mouse to zoom up the desired area of the graph for better viewing. The Min, Max and Average statistics at the bottom of the graph update automatically when the graph is zoomed.